

Biltmore Cottage Collection

by Biltmore Farms Homes



shown with upgraded garage door

The Bungalow Craftsman

(shown with optional two car garage and third bedroom)

1,636 main level square feet • 1,023 optional lower/terrace level square feet

3 bedrooms (Option to 5) • 2 baths (Option to 3)

Secluded master suite

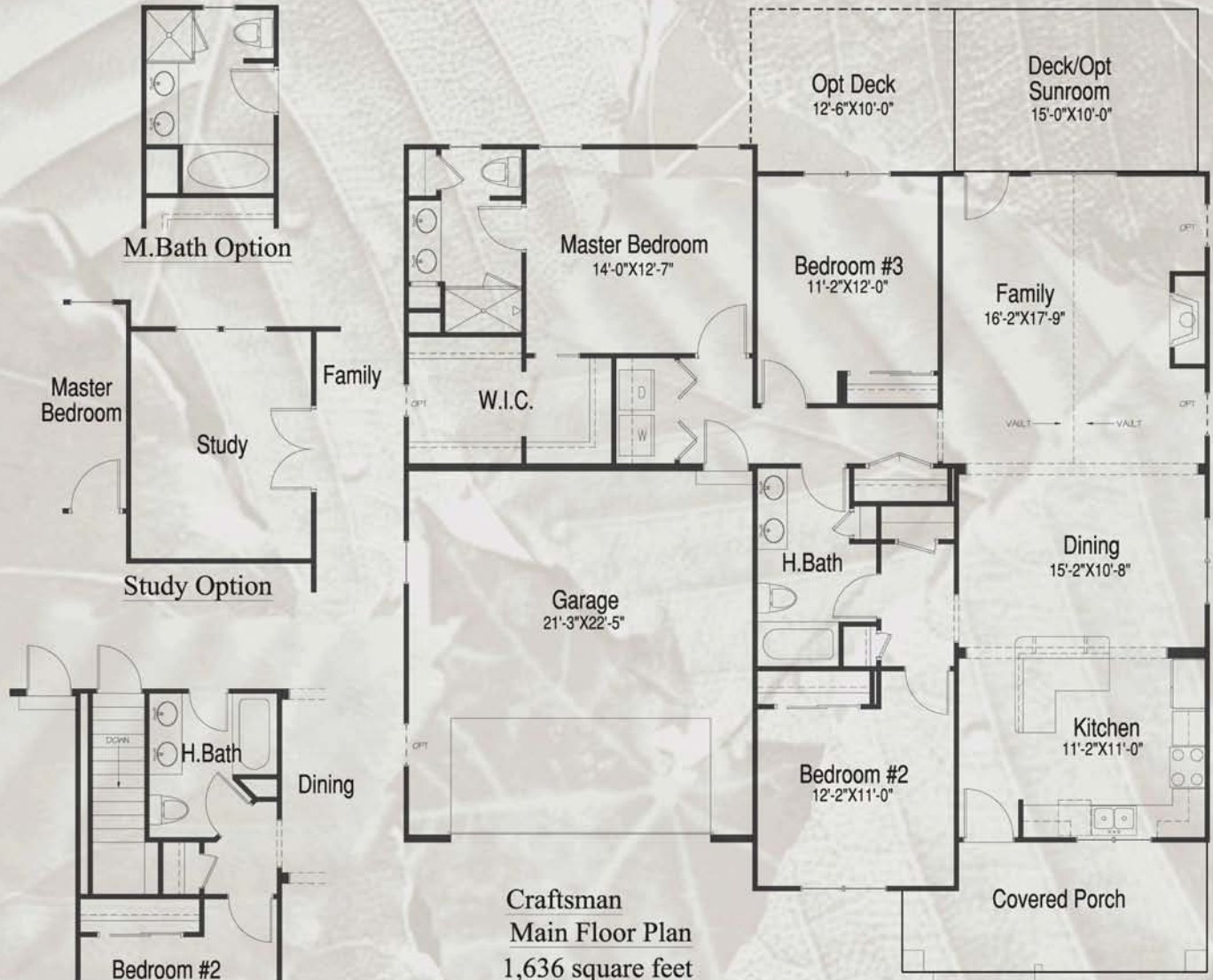
Open floorplan

Volume ceiling in family room



BILTMORE FARMS™
HOMES

www.biltmorefarmshomes.com



M.Bath Option

Master Bedroom

Study

Study Option

Family

W.I.C.

Master Bedroom
14'-0" X 12'-7"

Bedroom #3
11'-2" X 12'-0"

Family
16'-2" X 17'-9"

Garage
21'-3" X 22'-5"

H.Bath

Dining
15'-2" X 10'-8"

Kitchen
11'-2" X 11'-0"

Bedroom #2
12'-2" X 11'-0"

Covered Porch

Craftsman
Main Floor Plan
1,636 square feet

Bedroom #2

Dining

H.Bath

Lower Floor Stairs Option

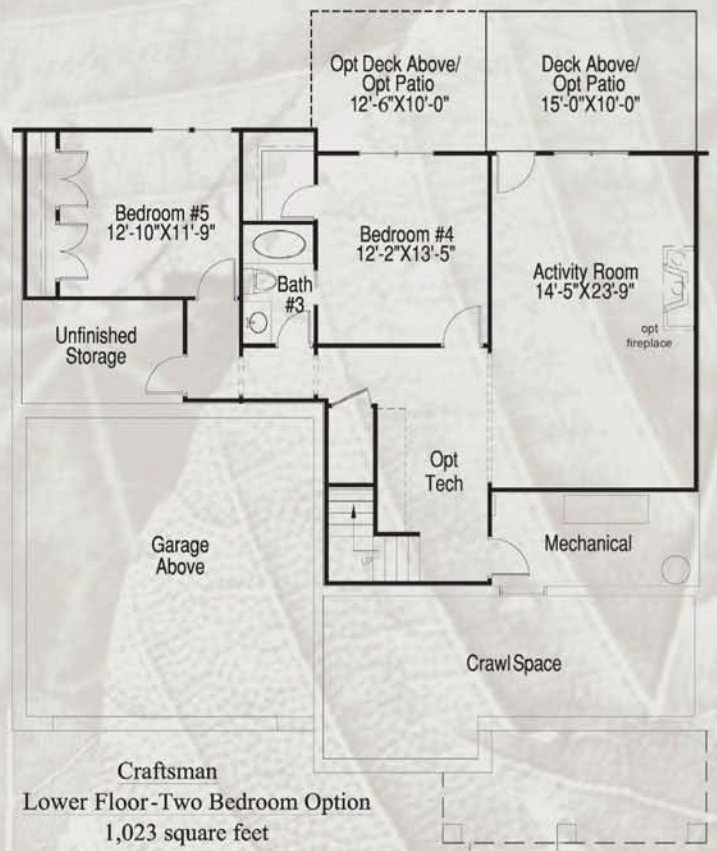
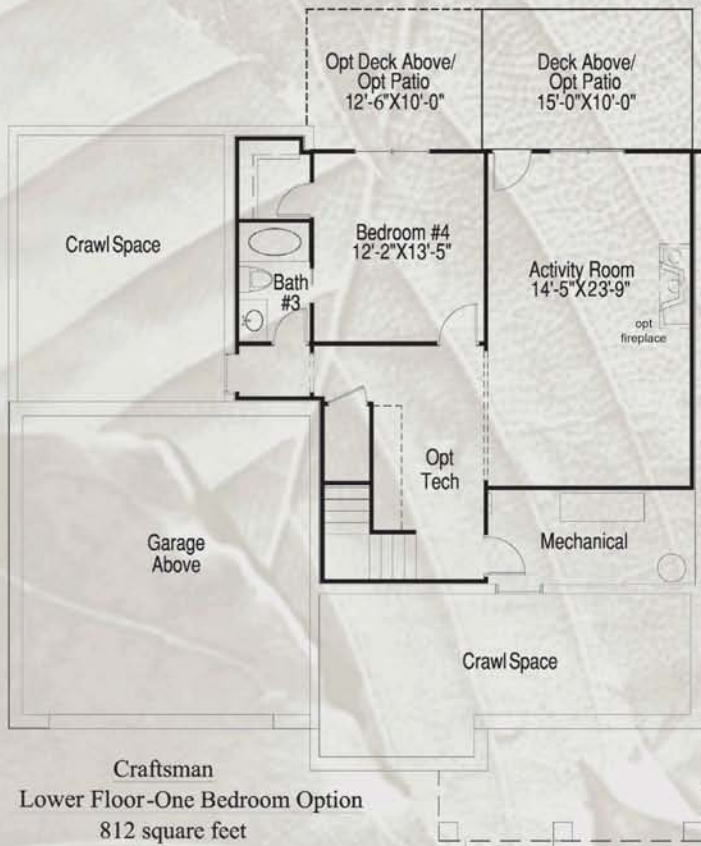
The Bungalow



BILTMORE FARMS™
HOMES

www.biltmorefarmshomes.com

All dimensions and specifications (including square footage) are approximate and artists conceptions. Product availability, prices, floor plans, elevations, and specification levels are subject to change without notice or obligation.



The Bungalow



BILTMORE FARMS
HOMES

www.biltmorefarmshomes.com

All dimensions and specifications (including square footage) are approximate and artists conceptions. Product availability, prices, floor plans, elevations, and specification levels are subject to change without notice or obligation.

Biltmore Cottage Collection

by Biltmore Farms Homes



shown with upgraded garage door

The Bungalow Arts & Crafts



The Bungalow Cottage



The Bungalow Rustic



shown with upgraded garage door

The Bungalow Lodge



BILTMORE FARMSSM
HOMES

www.biltmorefarmshomes.com

The Biltmore Cottage Collection is a product offering of Biltmore Farms HomesSM. Biltmore Farms HomesSM is a trademark of Biltmore Farms, LLC. Biltmore Estate[®] is a registered trademark of The Biltmore Company, Inc., Asheville, NC, which owns and operates Biltmore Estate[®] independently of Biltmore Farms, LLC. ©2007 Biltmore Farms, LLC

